



AURICAL FreeFit

There's **no** such thing
as an **average ear**



otometrics
MADSEN • AURICAL • ICS

Probe Microphone Measurements have never been easier

When we set out to design the AURICAL FreeFit, we wanted to develop a fitting solution that would give you more capabilities, more accuracy and more confidence, without complicating the way you work. We knew that this meant looking beyond traditional REM – so we designed the **FreeFit** which combines all the benefits of Probe Microphone Measurements (PMM) in a single, ease-to-use device.

REM and much more
PMM isn't new – it was first introduced by the Otometrics company Rastronics in 1984, and was the original term for what we call REM today. But it's broader than what we normally think of as REM, encompassing virtually any measurement taken in the ear using a probe microphone, including REM, Speech Mapping and much more.

The best choice for every client

FreeFit covers the client journey from counseling, to fitting and verification, and on to benefit assessments of hearing aid features. FreeFit is designed so you don't have to change the way you work significantly – and that's why we believe FreeFit will enable you to work with Probe Microphone Measurements every day and on every client in your clinic.





Four unique elements

AURICAL FreeFit gives you four unique elements within Probe Microphone Measurements (PMM) – Dynamic REM, Speech Mapping, FitAssist tools and FreeStyle. By combining these, you'll be able to **FIT** with true precision the first time, **SHOW** the real difference between different hearing aids, and **WORK** with newfound freedom and efficiency.

Try telling your clients they have **average ears...**

When you program a new hearing instrument, chances are you're fitting to an average ear and not to your client's own ear and needs. At Otometrics, we think there's a better approach.

AURICAL FreeFit comprises four PMM elements that combine to form a complete solution.



Absolute precision no matter who you're measuring, no matter what brand of hearing aid you're fitting.

The first two, Dynamic REM and our unique FitAssist tools, enable you to achieve a more accurate, confident fit at the first visit.

Dynamic REM for ultimate precision

To achieve true precision on the first fit, you need more than just average calculations and client feedback. FreeFit's Dynamic REM module lets you combine traditional REM functionality with speech and dynamic stimuli, so you can verify your fittings against NAL NL1, DSL v5.0b, and FIG6 fitting prescriptions. You can measure curves individually or in a sequence, and adapt the fitting process to meet individual needs.

The module uses modern speech signals such as ISTS and real speech passages to achieve more "real world" fittings and verifications. The dynamic nature of these signals has enabled

us to include percentile analysis as an integral part of your measurements. This will help you to more accurately assess the peaks and valleys of speech inside the ear canal, and to adjust the dynamic parameters of the hearing instrument to better match the clients' individual dynamic range.

FitAssist for easier fitting

FreeFit's collection of FitAssist tools makes fitting easier and improves accuracy. For example, FreeFit converts ABR and ASSR thresholds from nHL (measured electrophysiologic threshold) to eHL (estimated Hearing Level) automatically. The Occluded Probe-Tube Detector protects you from making measurements under poor conditions by alerting you when a tube is pinched or blocked. And the Feedback Finder ensures accuracy by alerting you to potentially undetected feedback that can contaminate your measurement.



The wireless and binaural hardware enables you to work close to your client.



Your clients will agree that no two ears are alike, and appreciate the individual attention.



FIT [with true precision the first time]

- Occluded Probe-Tube Detector
- Dynamic signal analysis (LTASS and percentile curves)
- Real speech stimuli (ISTS and recorded passages)
- OpenREM calibration
- Vocal Effort Filters
- Validated fitting prescriptions (Target Rules)
- ABR /ASSR data conversion
- Feedback Finder

Convincing your clients has never been easier

Client acceptance is an important part of your business, but it can be challenging to make clients really feel comfortable about an amplification choice. With its FreeStyle and Speech Mapping elements, FreeFit changes all that.

FreeStyle and Speech Mapping

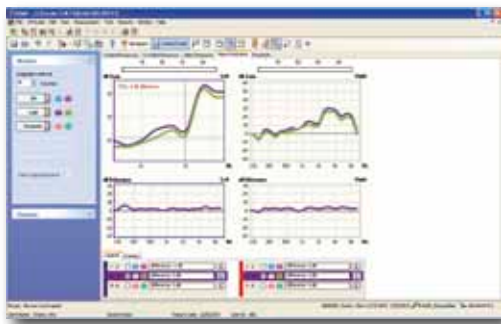
FreeFit's FreeStyle element offers a unique "Feature-2-Benefit" view mode that enables you to clearly demonstrate how the features of different hearing

instruments affect your clients' hearing. This makes it much easier for your clients to understand the difference between different hearing aids.

FreeStyle includes pre-defined protocols for demonstrating noise reduction, directionality and a range of other hearing instrument features – enabling compelling demonstrations at the push of a button. And you can quickly define new protocols to evaluate new hearing aid features as they reach the market.

demonstration of features, a "Live" mode lets you measure using sound files played by the hearing instrument software.

The system also pairs well with surround-sound, multi-media tools for complete flexibility in triggering adaptive features. Another unique feature is the ability to monitor, record and play back the signal at the eardrum, enabling you to hear what your client hears for improved troubleshooting and hearing aid feature understanding.



Our "Feature-2-Benefit" view mode offers several unique capabilities, including Curve Zoom functionality.

FreeFit also includes a Speech Mapping module that can be used in conjunction with FreeStyle or Dynamic REM.

Real signals

FreeFit comes with an extensive built-in sound library, as well as the ability to select CD tracks and recorded signals as your sound file source. For a more accurate triggering and

Acceptance through counseling

FreeFit's advanced counseling and simulation capabilities help you involve your clients and their relatives in the acceptance process. Hearing Loss and Hearing Instrument Simulators help them visualize the solution options, while a Predicted Aided Audiogram lets you demonstrate the expected benefits.



After narrowing down hearing aid options, FreeFit enables you to show the difference between the options you are considering.



A picture's worth a thousand words, especially for family members who need explanations and answers.



SHOW [the real difference between different hearing aids]

- FreeStyle with Feature-2-Benefit view mode
- Speech Mapping
- Hearing Loss and Hearing Instrument Simulators
- Curve Zoom
- Extensive sound library
- Noise reduction testing
- Measurement to 10 kHz
- Predicted Aided Audiogram

It's more practical than you might think

Probe Microphone Measurements are often thought to be difficult, time-consuming, or appropriate only for especially challenging cases. With AURICAL FreeFit, this isn't the case at all.

FreeFit improves fitting accuracy and facilitates acceptance. It will also improve your workflow, enabling you to deliver more without adding significant time to the process.

An efficient tool for everyday use

The FreeFit system is controlled via our intuitive OTOSuite software. A simple control panel makes signal selection easy,

while the work area – with its advanced viewing capabilities – shows you REAR (SPL at the eardrum), aided gain, insertion gain, and a Predicted Aided Audiogram for a given measurement by simply toggling a button.

Never has a fitting tool gathered so much information from a single measurement, or offered simultaneous support for different approaches to prescriptive fitting.

Designed for Open fittings

With the well-known AURICAL Plus, Otometrics was the first manufacturer to facilitate practical verification of open fittings using a modified pressure method with stored equalization (MPSE).

The technique has since become commonly known as OpenREM calibration.

FreeFit takes OpenREM a step further by providing calibration for all signal types, not just constant level

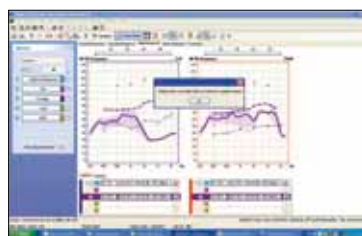
input. OTOSuite's ergonomic workflow also makes it easier to determine whether your fitting is truly open or occluded, and whether OpenREM calibration is required.

Customizable protocols and sequences

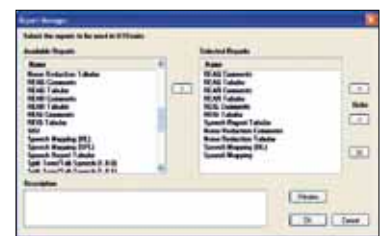
FreeFit's advanced user setup lets you work the way you like, and is easily adapted to local standards and protocols. The system offers a range of personal user settings and straightforward pre-defined measurement sequences. This saves time and is part of the reason why FreeFit is so much easier to work with than traditional REM systems.

Wireless and binaural

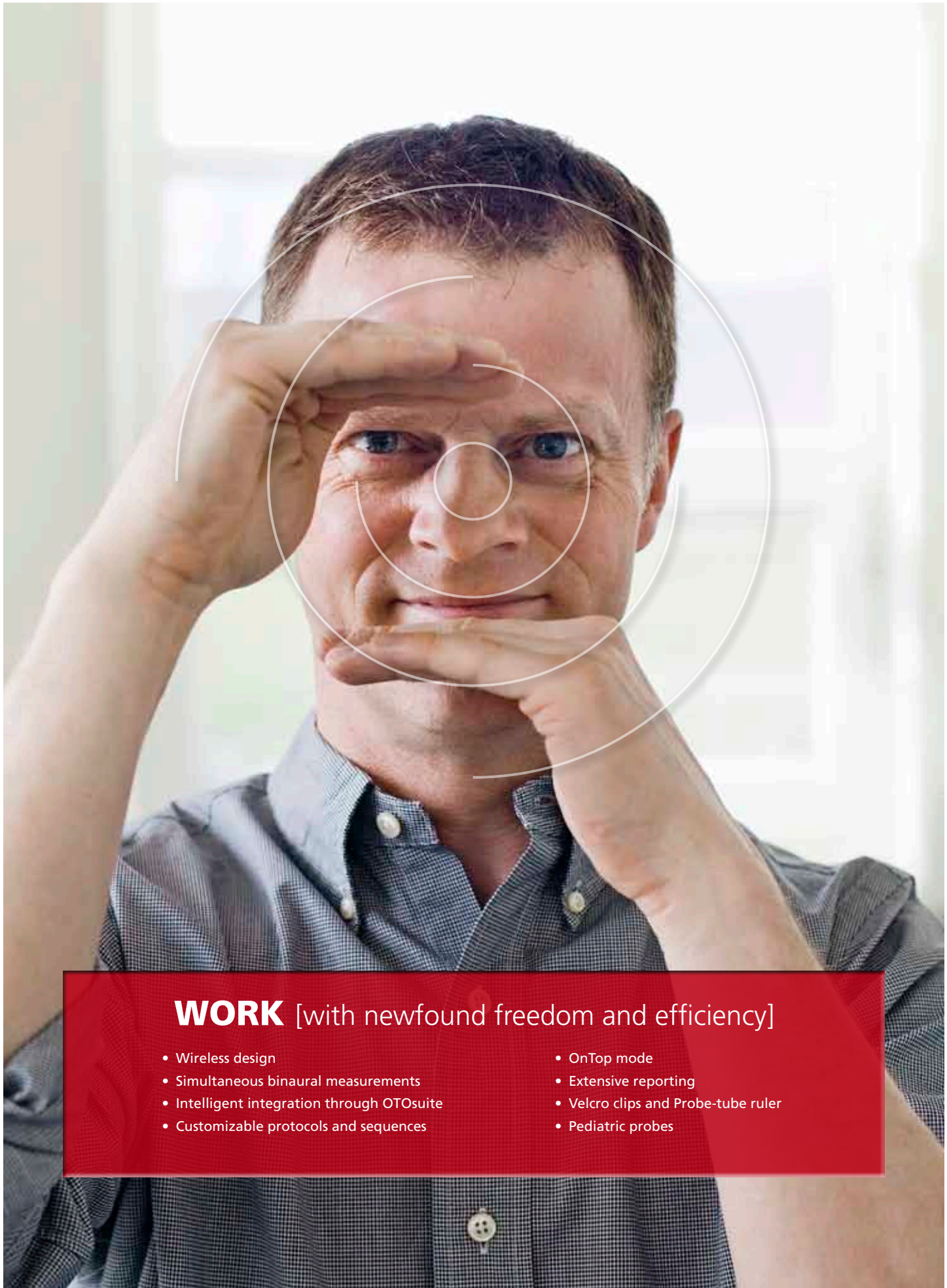
As a wireless device, FreeFit eliminates the need for cables between hardware and PC. Combined with NoahLink, this means completely wireless operations. Add in binaural measurements, and you get a far more efficient and comfortable fitting session.



Occluded Probe-Tube Detector: Alerts you when a tube is pinched or blocked.



Report Manager: OTOSuite comes with a large number of pre-defined reports you can use at your convenience.



WORK [with newfound freedom and efficiency]

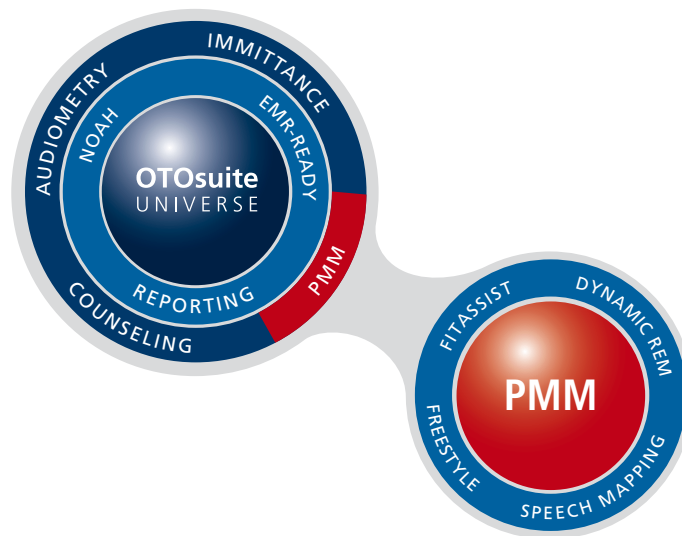
- Wireless design
- Simultaneous binaural measurements
- Intelligent integration through OTOSuite
- Customizable protocols and sequences
- OnTop mode
- Extensive reporting
- Velcro clips and Probe-tube ruler
- Pediatric probes

Fully integrated with OTOsuite

AURICAL FreeFit is fully integrated within the OTOsuite™ software universe. OTOsuite provides access to everything you need for the entire client journey, including audiometry, immittance, fitting and verification tools – via a single intuitive

software interface. This makes testing and data handling more efficient and accurate. OTOsuite also offers an easy-to-use reporting tool. You can choose from a range of templates that you can customize with your name and logo. OTOsuite is

EMR-READY (Electronic Medical Records) and NOAH compatible. Direct integration with NOAH ensures a streamlined, integrated fitting workflow that saves you time and gives your clients a better fitting experience.



The next step in AURICAL excellence

The renowned AURICAL brand reflects decades of audiological experience and is well-established as the most trusted and efficient solution available for clinical fitting.

AURICAL FreeFit is the latest addition to Otometrics' portfolio of fitting systems. FreeFit takes hearing instrument fitting to a new level by making Probe Microphone Measurements (PMM) so easy and straightforward to use that it becomes an every-client tool. FreeFit is a perfect example of how the AURICAL brand is constantly evolving to meet your needs.

Learn more about AURICAL FreeFit and the AURICAL legacy at www.otometrics.com/freefit

Otometrics is the world's leading manufacturer of hearing and balance instrumentation and software, providing solutions ranging from infant screening applications and audiological diagnostics to balance testing and hearing instrument fitting.

● Hearing Assessment ● Fitting Systems ● Balance Assessment

GN Otometrics, Europe. +45 45 75 55 55. info@gnotometrics.dk
GN Otometrics, North America. 1-800-289-2150. sales@gnotometrics.com
www.otometrics.com